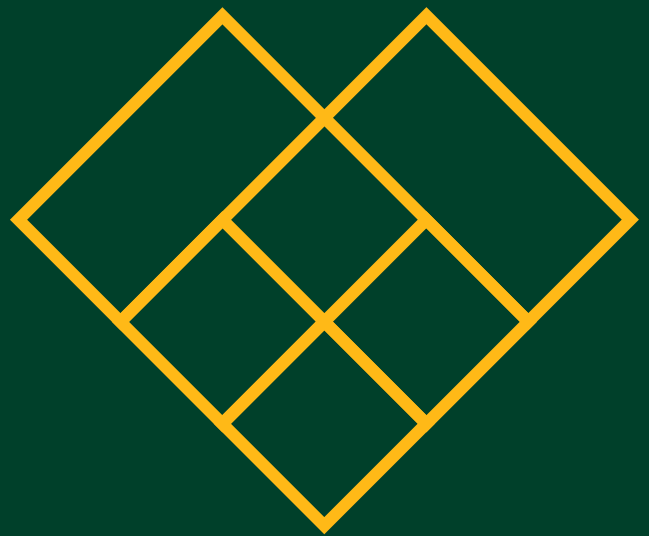




Carbon Reduction Strategy

2025



PREPARED BY:

PAUL BRESLIN BSc DipESG CMIOSH PCQI GradIEMA

ESG & Regulatory Risk Director

Contents:

1.	Introduction	p3
2.	Our Chosen UNSDGs	p3
3.	Organisational Structure	p4
4.	Carbon Reduction Timeline	p6
5.	Reporting Scope	p7
6.	Data Reporting	p8
7.	Emissions Inventory	p9
8.	Our Approach To Carbon Reduction	p10
9.	Monitoring And Reporting	p12
10.	Declaration	p13
11.	References	p13

1. Introduction

The Brundtland Commission defined sustainability as meeting the needs of the present without compromising the ability of future generations to meet their own needs. In the context of Igne being sustainable, it means that our operations and services are environmentally friendly, socially responsible, and economically viable to ensure long-term success and wellbeing for both current and future stakeholders.

We have disclosed details of our carbon accounting in the our ESG report for the calendar year after recalculation of our baseline data due to structural changes. [Our ESG report can be found here.](#)

This reduction plan identifies our most significant ESG issues and it contains plans for our future Net Zero roadmap. Igne Group Ltd has utilised an operational control approach and has engaged with an external consultant to provide guidance and advice on our environmental data to ensure we report to corporate standards for greenhouse gas (GHG) reporting.

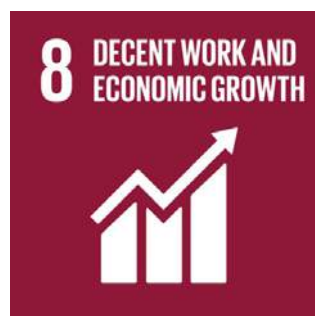
“Igne Group has formed a centralised Sustainability team who provide overarching support to all Igne companies to advise and guide our sustainability strategy, including decarbonisation, and have a network of individuals within in each business driving the sustainability strategy through every part of the organisation.”

Looking ahead to the next five or ten years and beyond, there are uncertainties. On this journey, it will be necessary to stop regularly, evaluate our progress, and consider our previous approach to ensure we are on the track for the targets we are aiming for.

Finally, decarbonization requires significant collaboration. It's crucial that our customers, clients and supply chain consider their own impacts and influence they hold with their staff and wider stakeholders.

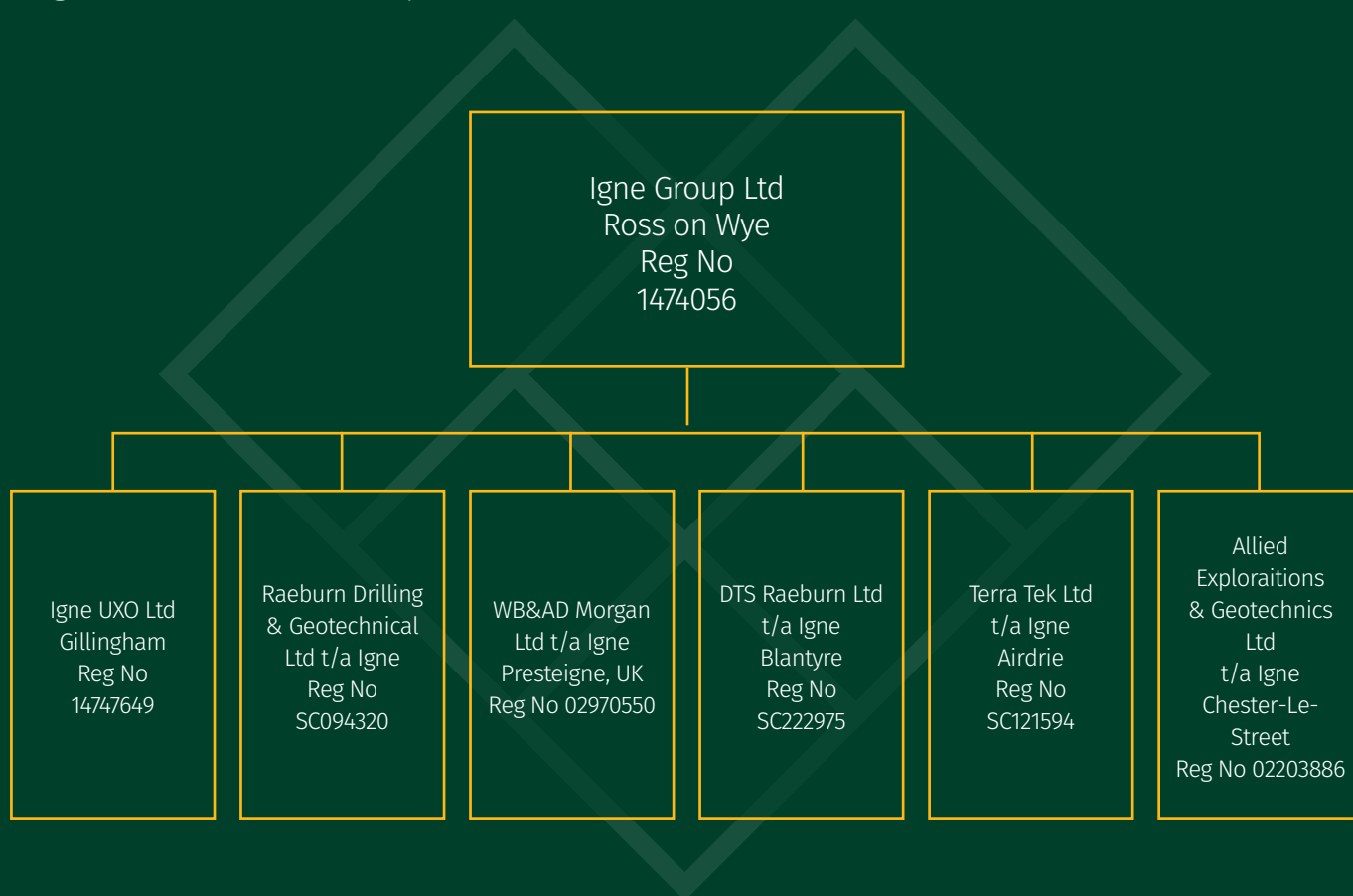
2. Our Chosen UNSDGs

Igne has chosen to benchmark against UNSDGs 5,8,12 & 13. These have particular relevance to our ESG strategy and carbon reduction plan. [For more in depth detail refer to our ESG report.](#)



3. Organisational Structure

Organisational Boundary



4. Roles and Responsibilities

CEO

The CEO has overall responsibility for ESG Governance and is accountable for its overall effectiveness. The CEO has initiated and fully supports the vision and strategic direction for the continued sustainability of the business.

ESG and Regulatory Risk Director

The ESG and Regulatory Risk Director is the business lead for sustainability and compliance areas and ensures implementation and the continual improvement of sustainability strategy and practices, and measurement of its effectiveness across Igne Group

Local Sustainability Ambassadors

Sustainability Ambassadors includes our QSHE managers and local representatives who are responsible for promoting best practice and acting as role models in their respective business units

All Staff

All Directors, managers and other employees shall fully support all the policies and objectives for sustainable performance. Igne Group's management shall endeavour, always, to create an environment where our people are fully involved and in which our Carbon Reduction Strategy and policy can operate effectively.

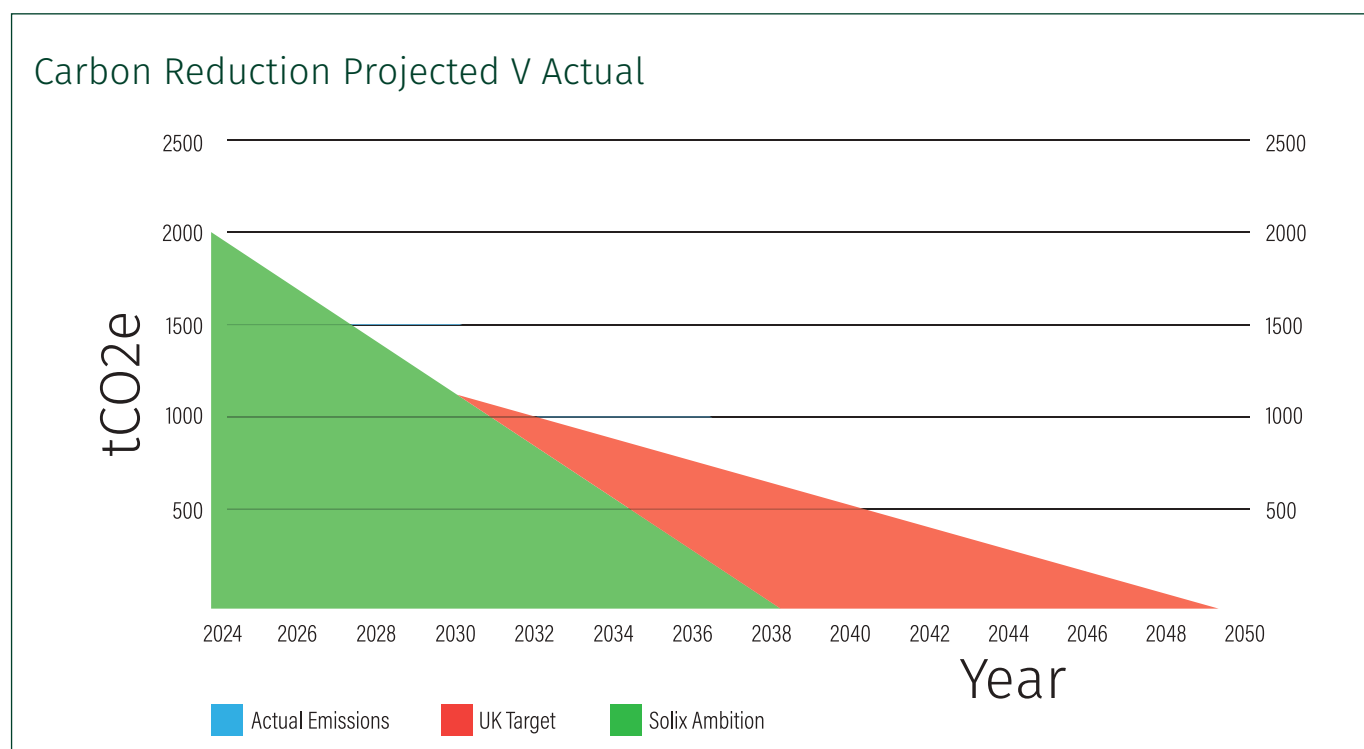
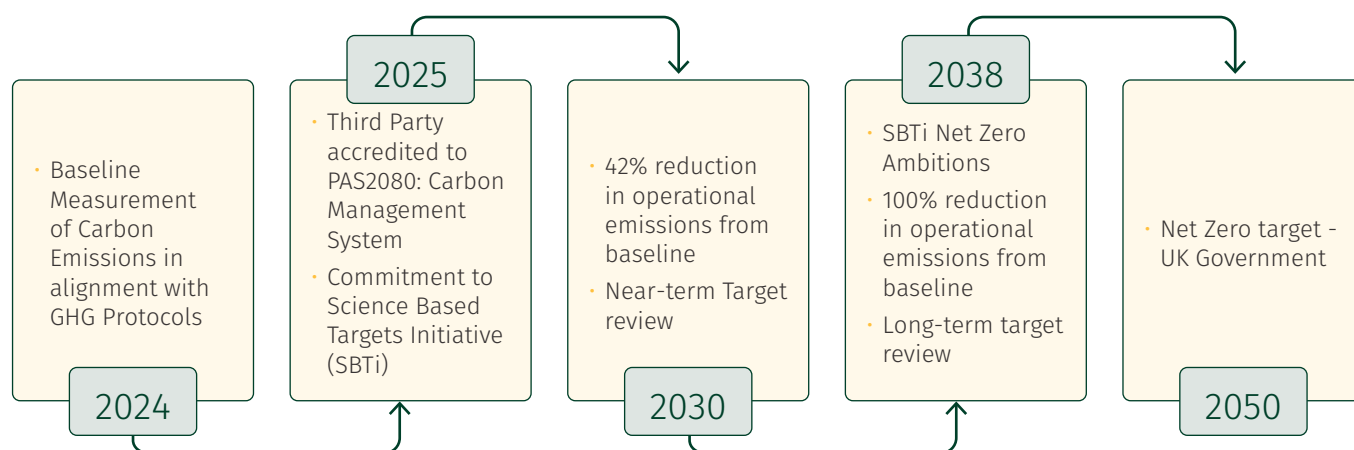


5. Carbon Reduction Timeline

Igne has set ambitions to be Net Zero by 2050 in alignment with UK Government targets. Igne has committed to further ambitions which will reduce its operational carbon footprint and ensure that out trajectory to Net Zero is monitored effectively. The trajectory to Net Zero can be seen below:

Igne recognises that reducing our carbon impact is a critical and urgent issue that requires collective effort. As part of our commitment to the environment, Igne has developed a timeline for Net Zero which is achievable

and realistic. We have incorporated PAS 2080 – Carbon Management Principles as part of our strategy to consider carbon reduction at project level as well as corporate reporting and disclosure.



6. Reporting Scope

As part of our Carbon reduction strategy, we will ensure that our carbon impacts are identified in line with GHG Protocol reporting requirements and our future commitment to Science Based Targets Initiative (SBTi). Igne has already selected its temporal and organisational boundaries, which we aim to have third-party audited to ensure accuracy and transparency.

Igne Group set its baseline as FY2024 and has provided comprehensive data and presenting it back to all our stakeholders via our ESG reporting. Our direct emissions inventory includes all GHG scope 1 & 2 emissions and pre-screening our carbon arising from select scope 3 emissions;

Scope 1

- Transportation Fuel
- Natural Gas
- Oils & Lubricants
- Site Plant and Equipment Fuel Usage
- Welfare Facilities & Generator Usage

Scope 2

- Indirect Emissions from Grid Electricity

Scope 3

- Staff transport in non-company owned vehicles, Air travel and Rail travel
- Third party procured fuels and energy (including Well to Tank impacts)
- Hotel stays
- Water use
- Waste arising from our operations
- Well to Tank emissions arising from all Scope 1 & scope 2 emissions sources.
- Raw materials
- Employee Commuting

For scope 2 emissions accounting we have chosen to report 'Absolute Emissions' from our electricity use using the location-based methodology. We feel this is the most appropriate way to account for this emissions source.

In addition, it is recognised that biofuels and bioenergy are beginning to play a role in decarbonising our business and indeed the sector at large. We have chosen to disclose the GHG protocol defined 'out of scopes' emissions associated with the use of Biogenic emissions. However, as these are not deemed a net contributor to global carbon emissions, they are not included in Igne's total net emissions.

Igne is in the process of identifying a sub-set of scope 3 emissions and not the full scope 3 inventory due to relevance to the application within our business.

Standards and Methodology

We will be follow ESRS and CSRD standards for ESG reporting. Forming part of this report will be our Carbon Emissions reporting, where we will report to GHG Protocol - Corporate Standards. This will ensure our GHG inventory represents a true and fair account of our emissions through the use of standardized approaches and principles. Our conversion factors used to calculate the emissions are based on the use of Primary Data where available and the application of UK Government DEFRA conversion factors.

Recalculation Policy

Recalculation of the baseline accounts will be undertaken under the following circumstances

- Re-calculation due to structural changes
- Re-calculation due to changes in the calculation methods (scope 3)

7. Data Reporting

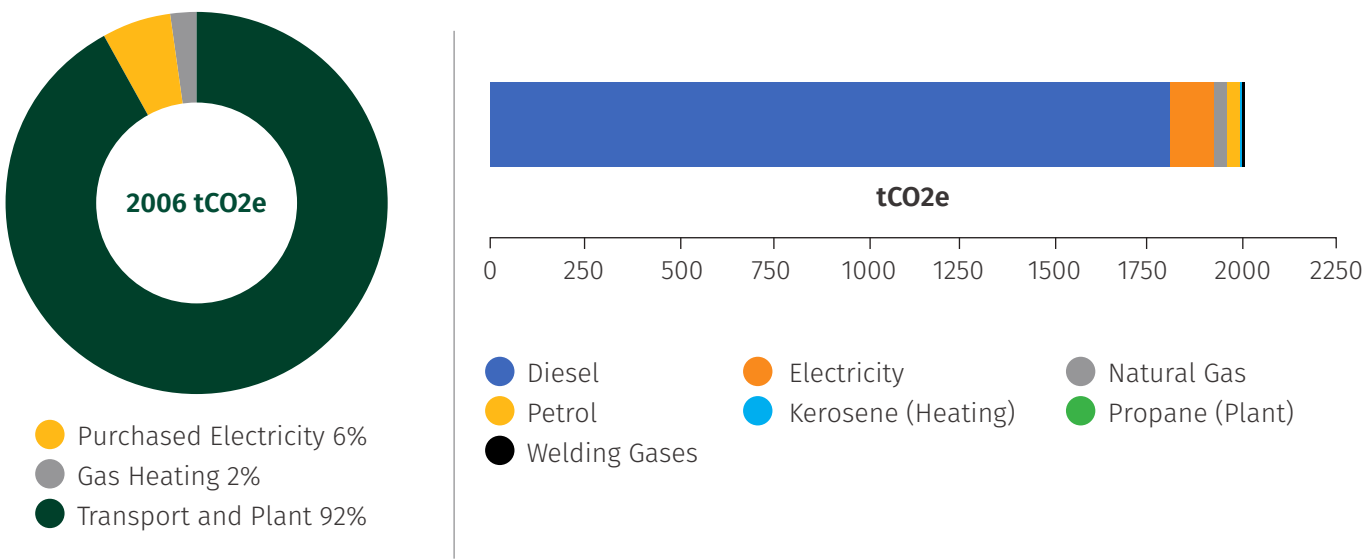
The tables and charts below provide a summary of our carbon emissions in comparison to baseline and by intensity.

Emissions reporting 2024 baseline data

	Baseline Emissions 2024	
Emissions scope	tCO2e	tCO2e/Person
Scope 1	1893.29	6.53
Scope 2	112.92	0.60
Total S1 & S2	2006.22	7.13
Out of scope	117.17	-

Scope 1 & 2 Reporting

2024 Emissions Sources Reporting



8. Emissions Inventory

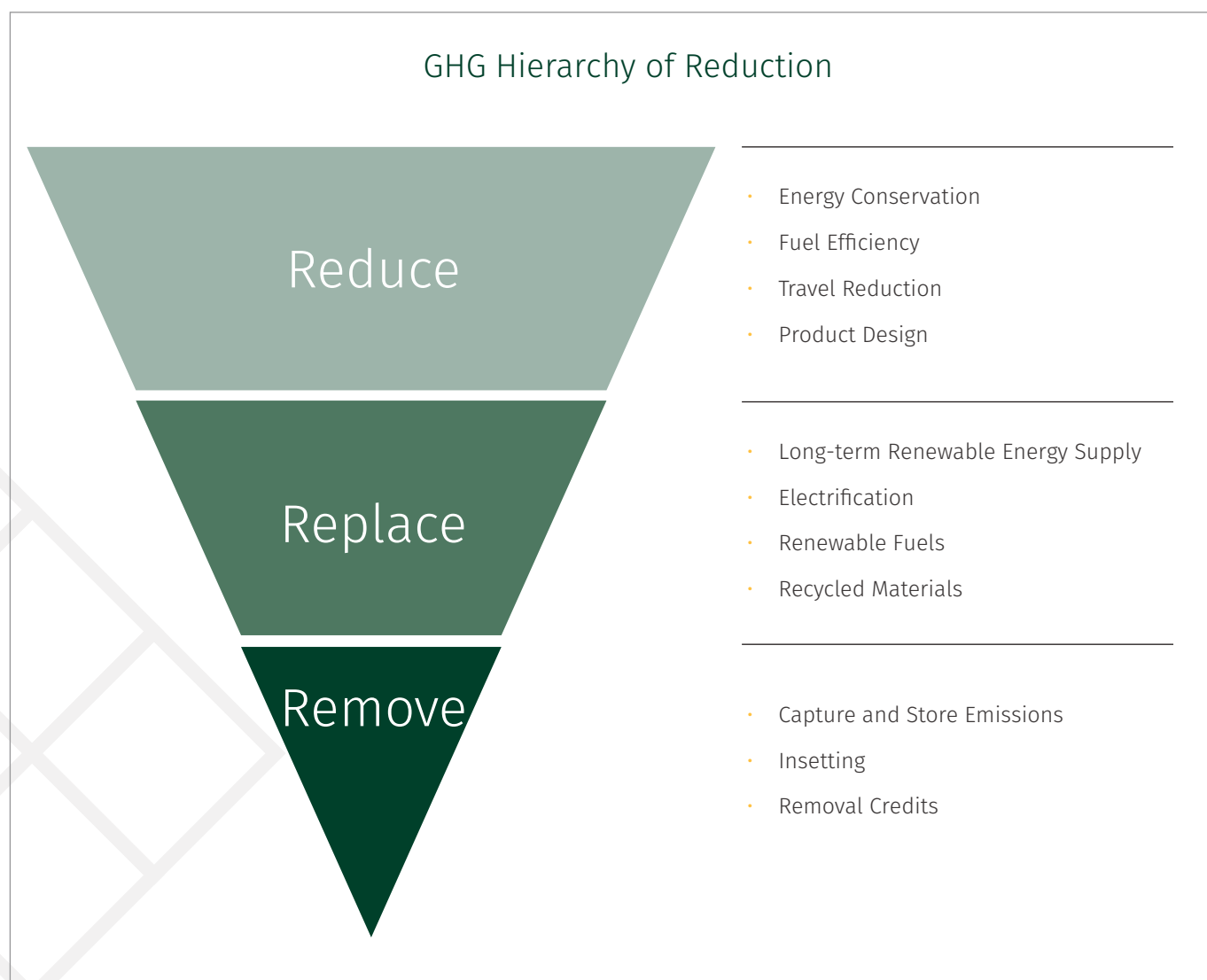
Scope	GHG Category	Item	Unit	Carbon Conversion Factor Source	Data Type	Data Source	Data uncertainty	Comments
Scope 1	N/A	Company fleet fuel (diesel/ petrol)	litre	DEFRA	Primary (Measured)	Fuel logs / fuel card data	Low	Covers diesel/ petrol for vans, company cars, LGVs
Scope 1	N/A	Rig, dumper, telehandler fuel	litre	DEFRA	Primary (Measured)	Bulk fuel purchases	Low	Includes tracked rigs, telehandlers, and dumpers
Scope 1	N/A	Generators (diesel/LPG)	litre	DEFRA	Primary (Measured)	Project usage logs	Medium	Diesel or LPG-powered site generators
Scope 1	N/A	Refrigerants, welding gases	kg	DEFRA	Estimated	Maintenance records	Medium	If applicable (refrigerant leaks or gas systems)
Scope 1	N/A	Gas heating at depots/offices	kWh	DEFRA	Primary (Measured)	Utility bills	Low	Applies to offices, labs, and compounds with gas
Scope 2	N/A	Office, lab and compound electricity	kWh	DEFRA	Primary (Measured)	Utility bills	Low	UK average electricity factor, location-based
Scope 3	1. Purchased Goods and Services	Consumables and drill materials	various	DEFRA	Measured/ Estimated	BoQs, site logs	Medium	Supplier declaration where available
Scope 3	3. Fuel- and Energy-Related Activities	Upstream fuel processing	litre	DEFRA	Calculated	DEFRA multipliers	Low	Well to tank emissions
Scope 3	4. Upstream Transportation and Distribution	Delivery of consumables and plant	tonne. km	DEFRA	Estimated	Supplier data / invoice locations	Medium	Supplier measurement
Scope 3	5. Waste Generated in Operations	Spoil, arisings, used PPE	tonne	DEFRA	Estimated	Waste transfer notes	High	Spoil, used PPE, sample bags, cuttings etc.
Scope 3	6. Business Travel	Air, train, hire car	mile/ km	DEFRA	Primary (Measured)	Expense system / bookings	Low	Flights, train travel, hotel use and hire cars
Scope 3	7. Employee Commuting	Private cars, pool car use	mile	DEFRA	Estimated	HR survey	High	Includes private vehicles or pool car use
Scope 3	8. Upstream Leased Assets	Hired rigs/ vehicles not owned	day	DEFRA	Primary (Measured)	Hire records	Med	Used for upstream hire and site assets (e.g., cabins)
Scope 3	9. Downstream Leased Assets	Specialist services under hire	day	DEFRA	Estimated	Subcontractor reports	High	Includes UXO, labs, hired plant not owned by Igne
Scope 3	10. End-of-Life Treatment of Sold Products	Cuttings, liners, sample bags	kg/ tonne	DEFRA	Estimated	Waste carriers		Spoil, used PPE, sample bags, cuttings etc.

9. Our Approach To Carbon Reduction

Scope 1 Emissions

Igne's emissions are significantly attributable to transportation and mobile plant and this accounts for 92% of our reported Scope 1 emissions. Our Commercial, HGV and Plant fleets are essential to our service and we are already in the process of decarbonising our company car fleet across all businesses.

To reduce our carbon footprint from our fleet operations, we will use the GHG Hierarchy of Reduction;



Stage 1 – Avoid

Igne's first principle will be to avoid increasing our carbon footprint by identifying activities that can be stopped without any adverse effect on the business.

Stage 2 – Reduce

Igne aims to reduce our carbon emissions by reviewing our overall fleet coverage and identifying where reductions can be made. These considerations will be based on cost effectiveness and viability. The following approaches should be considered:

- Reducing the overall fleet size by sharing vehicles and car pooling
- Reducing mileage by promoting overnight stays where practical and cost effective
- Reducing fuel consumption through driver training and better driving techniques
- Reducing emissions by ensuring that fleet vehicles are subject to regular maintenance checks

Stage 3 – Replace

Igne has already begun to prioritise replacement of existing company vehicles with EV and Hybrid alternatives. Consideration should be given to further actions:

- Replace all vehicles which are not Euro 6 compliant with modern plant and vehicles
- Replace with hybrid or EV commercial vehicles
- Replace Fossil Fuels with Green Alternatives (HVO or Hydrogen)

Stage 4 – Remove

Residual emissions which have a low impact on overall carbon footprint can be removed by offsetting, however this would be only considered after evaluation of carbon footprint reduction strategies has been conducted and direct action taken to reduce our major emission sources.

Innovations and Future Considerations

Igne will explore innovative solutions for environmental challenges. This can include the development of new technologies or practices to minimise environmental impacts associated with our premises and projects or to minimise the environmental impacts of our operations.

Enhancement of Natural Environment

To ensure the impact to habitat and species and biodiversity is minimised, Igne will take consideration of alternative methods of site survey and site assessment.

Sustainable Supply Chain

Igne recognises the importance of collaborating with suppliers who share our commitment to sustainability. We will actively engage with our supply chain partners sources. By integrating sustainability criteria into our procurement processes, we can promote responsible business practices throughout the supply chain. Igne will endeavour to maximise influence of our stakeholders to protect the environment and improve the environment for all.

Stakeholder Engagement:

Igne will actively engage with our stakeholders, including employees, clients, suppliers, and local communities, to raise awareness about climate change and encourage their participation in sustainable practices.

Igne will use its in-house expertise in environmental management and consultancy to provide technical support and advice for projects. This can include conducting environmental assessments, compliance monitoring, and providing guidance on best practices.

10. Monitoring & Reporting

Igne will report our carbon performance as part of our annual ESG reporting requirements in line with ESRS and CSRD standards. This will ensure that our data is accurate and validated.

All data will be validated through direct measurement and accounting. Where calculations are required to estimate carbon levels, methodology will be declared. Examples of measurement can be seen in our Emissions Inventory.



11. Declaration

This Carbon Reduction Plan has been completed in accordance with PPN 06/21 and associated guidance and reporting standard for Carbon Reduction Plans. This plan applies to Igne Group Limited including all of its subsidiaries

Emissions have been reported and recorded in accordance with the published reporting standard for Carbon Reduction Plans and the GHG Reporting Protocol corporate standard and uses the appropriate Government emission conversion factors for greenhouse gas company reporting.

This Carbon Reduction Plan has been reviewed and signed off by the Executive Directors of Igne Group Ltd and will be reviewed annually.

Signed on behalf of Igne Group Ltd:


.....
.....

ESG and Regulatory Risk Director

12. References

[igne-esg-2024.pdf](#)

[Ambitious corporate climate action - Science Based Targets Initiative](#)

[SBTi Corporate Net-Zero Standard V1.2 \(sciencebasedtargets.org\)](#)

<https://ghgprotocol.org/corporate-standard>

<https://ghgprotocol.org/standards/scope-3->

[Greenhouse gas reporting: conversion factors 2025 - GOV.UK](#)



Informed | In-depth | Integrated